

PARTICIPATE BEFORE THE MEETING by emailing TrafficCommission@TorranceCA.Gov by 2:00 p.m. on the day of the meeting. Write "Public Comment" in the subject line and in the body of the email include the item number and/or title of the item with your comments.

In compliance with the Americans with Disabilities Act, if you need special assistance to participate in this meeting, please contact the City Clerk's office at (310) 618-2780. Notification 48 hours prior to the meeting will enable the City to make reasonable arrangements to ensure accessibility to this meeting. [28CFR35.102-35.104 ADA Title II]

Direct questions or concerns to the Commission Liaison, Shin Furukawa at (310) 781-6900 prior to submission to the Commission. Parties will be notified if the concern will be included on a subsequent agenda.

Any correspondence received before 2:00 p.m. on the day of the meeting on any item on the agenda will be provided to the Commission electronically and available for public inspection in the City Clerk's Office. A copy of the correspondence will be available for public inspection in a binder at the back of the Council Chamber or Commission Meeting room.

**TORRANCE TRAFFIC COMMISSION AGENDA
DECEMBER 2, 2024
REGULAR MEETING
7:00 P.M. IN WEST ANNEX COMMISSION MEETING ROOM
AT 3031 TORRANCE BOULEVARD**

**TRAFFIC COMMISSION MAY TAKE ACTION ON ANY ITEM
LISTED ON THE AGENDA**

1. CALL MEETING TO ORDER

ROLL CALL: Commissioners: Endo-Roberts, Gibson, Nichols, Schwartz, Suruki, Vice-Chair Thoma, Chair Sharma.

2. FLAG SALUTE

3. REPORT OF THE STAFF ON THE POSTING OF THE AGENDA

The agenda was posted on the Public Notice Board at 3031 Torrance Bl. and on the City's Website on Wednesday, November 27, 2024.

4. ANNOUNCEMENT OF WITHDRAWN, DEFERRED, AND/OR SUPPLEMENTAL ITEMS

5. ORAL COMMUNICATIONS (Limited up to a 15-minute period)

*This portion of the meeting is reserved for comment on items on the Consent Calendar or not on the agenda. Under the Ralph M. Brown Act, the Commission cannot act on items raised during public comment, but may respond briefly to statements made or questions posed; request clarification; or refer the item to staff. **No longer than 1 minute per speaker.** If presenting handout material to Commission, please provide 10 copies to staff before speaking.*

6. CONSENT CALENDAR

Matters listed under the Consent Calendar are considered routine and will be enacted by one motion and one vote. There will be no separate discussion of these items. If discussion is desired, that item will be removed by a Commissioner from the Consent Calendar and considered separately.

6A. Approve Commission Minutes: November 4, 2024

7. ADMINISTRATIVE MATTERS

7A. Discussion of Proposed Traffic Calming Measures Adjacent to Calle Mayor Middle School on Calle Mayor, Mayor Drive and Juan Avenue

8. COMMISSION AND STAFF ORAL COMMUNICATIONS

9. ADJOURNMENT

9A. Adjournment of Traffic Commission Meeting to Monday, February 3, 2025 at 7:00 p.m. in the West Annex Commission Meeting Room.



**MINUTES OF REGULAR MEETING OF THE
TORRANCE TRAFFIC COMMISSION**

1. CALL MEETING TO ORDER

The Torrance Traffic Commission convened in a regular session at 7:00 p.m. on Monday, November 4, 2024, in the West Annex Commission Room.

ROLL CALL

Present:

Commissioners Gibson, Nichols, Schwartz, Suruki, and Thoma.

Absent:

Commissioner Endo-Roberts and Chair Sharma.

Also Present:

Engineering Manager Helen Shi, Deputy Public Works Director Shin Furukawa, Torrance Police Sergeant Koenig, and Police Services Supervisor John Newman.

MOTION: Commissioner Suruki moved to excuse the absence of Chair Sharma. Commissioner Schwartz seconded the motion; a roll call vote reflected 5-0 approval (Commissioners Endo-Roberts and Chair Sharma absent).

2. FLAG SALUTE

Commissioner Suruki led The Pledge of Allegiance.

3. REPORT OF STAFF ON THE POSTING OF THE AGENDA

Engineering Manager Shi reported that the agenda was posted on the Public Notice Board at 3031 Torrance Boulevard and on the City's Website on Thursday, October 31, 2024.

4. ANNOUNCEMENT OF WITHDRAWN, DEFERRED, AND/OR SUPPLEMENTAL ITEMS

Engineering Manager Shi reported (1) Supplemental Item.

5. ORAL COMMUNICATIONS

Members of the public spoke on traffic concerns. Commissioner Thoma requested that public concerns be addressed and placed on the Agenda for a future meeting. Deputy Public Works Director Furukawa acknowledged the request.

6. CONSENT CALENDAR

6A. APPROVAL OF MINUTES: OCTOBER 7, 2024

MOTION: Commissioner Suruki moved to approve the October 7, 2024, minutes. Commissioner Gibson seconded the motion; a roll call vote reflected 4-0 approval (Commissioner Nichols abstained, Commissioner Endo-Roberts and Chair Sharma absent).

7. ADMINISTRATIVE MATTERS

7A. DISCUSSION OF PROPOSED TRAFFIC CALMING MEASURES ADJACENT TO EDISON ELEMENTARY SCHOOL ON 182ND STREET

Engineering Manager Shi presented Item 7A, a discussion on proposed traffic calming measures adjacent to Edison Elementary School at 182nd Street.

- After receiving comments submitted to the City regarding traffic concerns, staff conducted observations on April 17, 2024, April 18, 2024, April 26, 2024, and August 27, 2024 during student drop-off and pick-up periods.
- On March 19, 2024, Torrance Police Department issued a press release in response to several reports of traffic concerns. The press release reported data on the number of vehicles traveling on the roadway along with the speed at which they traveled; the data revealed that the area was too congested to allow for excess travel speed and that 98% of the vehicles were traveling at or below the posted speed limit.
- After observations, staff suggests the following: repaint crosswalks, restripe the intersection with high visibility paint, replace the faded parking restriction signs on the south side of 182nd Street, install “No Left Turn” signs for westbound traffic on the north and south side of 182nd Street, install “No Left Turn” sign at the parking lot exit driveway, and address signal timing at 182nd Street and Doty Avenue to provide more “green time” as appropriate during peak school drop-off hours.

Engineering Manager Shi stated that additional internal analysis and test trials need to be done, but that most of the recommendations are to be implemented in the Spring of Summer of 2025.

8. COMMISSION AND STAFF ORAL COMMUNICATIONS

Deputy Public Works Director Furukawa provided an update on the Anza Improvement Project stating that the project has been completed.

Deputy Public Works Director Furukawa announced that Metropolitan Water District (MWD) will be working on the lower feeder pipeline project on Western Avenue and stated that although the project is not in Torrance’s jurisdiction, it will impact Torrance residents.

Commissioner Suruki requested and excused absent for the next scheduled meeting, Monday, December 2, 2024.

9. ADJOURNMENT

MOTION: At 7:40 p.m. Commissioner Nichols moved to adjourn the meeting to Monday, December 2, 2024, at 7:00 p.m. in the West Annex Commission Room. Commissioner Schwartz seconded the motion; a roll call vote reflected 5-0 approval (Commissioner Endo-Roberts and Chair Sharma absent).

###

Agenda Item No. 7A

TO: Traffic Commission

FROM: Craig Bilezerian, Public Works Director

SUBJECT: Discussion of Proposed Traffic Calming Measures Adjacent to Calle Mayor Middle School on Calle Mayor, Mayor Drive and Juan Avenue

RECOMMENDATION

The Public Works Director recommends that the Traffic Commission concur with staff's recommendation to implement traffic calming measures adjacent to Calle Mayor Middle School on Calle Mayor, Mayor Drive and Juan Avenue.

BACKGROUND

In February 2024, staff received a resident concern regarding congestion on Mayor Drive between Calle Mayor and Juan Avenue adjacent to Calle Mayor Middle School.

On February 15, 2024, staff met with Calle Mayor Middle School Principal Mosley and Councilmember Mattucci to discuss the traffic impacts on Calle Mayor, Mayor Drive, and Juan Avenue during student drop-off and pick-up times.

On April 1, 2024, the Traffic Commission took public input and discussed the traffic conditions in the vicinity of Calle Mayor Middle School including Calle Mayor, Mayor Drive, and Juan Avenue. During the public comment portion of the item, five residents of Mayor Drive shared their concerns with two-way traffic on Mayor Drive during the student drop-off and pick-up times, and the need to continue discouraging right-turns out of the student drop off area located in the school parking lot. One resident spoke in favor of converting Mayor Drive into a one-way street, while others recommended potentially restricting parking on one side of the street.

ANALYSIS

Existing Conditions

Calle Mayor Middle School, located at 4800 Calle Mayor, serves students in grades 6 through 8 in the southwest area of Torrance (Attachment 1). Existing traffic control measures around the school are detailed in Attachment 2. The school's bell schedule is as follows:

- On Mondays, Wednesdays, Thursdays, and Fridays, the campus opens at 8:20 AM and class begins at 8:40 AM.
- On Tuesdays, the campus opens at 9:05 AM and class begins at 9:25 AM.
- Classes end daily at 3:16 PM.

Observations

Staff conducted field observations of traffic conditions on the following days/times:

1. Friday, March 1, 2024 during the student drop-off period between 8:15 AM and 9:15 AM and the pick-up period between 2:45 PM and 3:45 PM
2. Thursday, March 28, 2024 during the student drop-off period between 8:15 AM and 9:15 AM
3. Tuesday, November 12, 2024 during the student drop-off period between 9 AM and 10 AM

During the observation periods, staff observed the following driver behaviors and conditions that contributed to congestion on Calle Mayor, Mayor Drive and Juan Avenue:

1. Westbound vehicles on Calle Mayor attempting to turn left into Juan Avenue and the student drop-off area, which is located 150 feet west of Juan Avenue, had to wait for a gap in eastbound traffic.
2. Outbound vehicles exiting the student drop-off area headed north on Juan Ave in conflict with inbound vehicles travelling south on Juan Ave, as well as westbound vehicles on Mayor Dr.
3. Northbound vehicles on Juan Avenue attempting to turn left onto westbound Calle Mayor during the morning drop-off period, when left turns are permitted, had to wait for a gap in traffic in both the eastbound and westbound directions. Additionally, vehicles queuing in the shared center turn lane on Calle Mayor to access the student drop-off area created difficulty for vehicles on Juan Avenue waiting to turn left onto westbound Calle Mayor.
4. Northbound vehicles on Juan Avenue attempting to turn right onto eastbound Calle Mayor had to wait for a gap in eastbound traffic. The proximity of the bus loading zone to the west and the queuing vehicles on eastbound Calle Mayor at signalized intersection to the east required vehicles on Juan Avenue to wait and proceed cautiously when turning right.
5. Northbound vehicles on Mayor Drive must yield to pedestrians crossing the west leg of the intersection with Calle Mayor before turning left onto westbound Calle Mayor. Those same vehicles also had to wait for pedestrians crossing the south and east legs of the intersection before turning right onto eastbound Calle Mayor.
6. The narrow widths of Juan Avenue and Mayor Drive, combined with two-way traffic and parked vehicles, significantly slowed the flow of traffic.

SUGGESTED TRAFFIC CALMING MEASURES

After receiving public input at the April 1, 2024 Traffic Commission meeting, City staff analyzed potential improvements. Below is a list of recommended measures that can be implemented:

1. At the intersection of Calle Mayor and Juan Avenue, implement the following additional turn restrictions:
 - a) Install "NO-LEFT TURN" signs on the north and south sides of Calle Mayor east of Juan Avenue to prohibit westbound left turns from 8:00 AM to 9:00 AM and from 3:00 PM to 4:00 PM on school days.
 - b) Install a "NO-RIGHT TURN" sign on the south side of Calle Mayor west of Juan Avenue to prohibit eastbound right turns from 8:00 AM to 9:00 AM and from 3:00 PM to 4:00 PM on school days.
 - c) Modify the existing "NO-LEFT TURN" sign for northbound traffic on Juan Avenue to prohibit left turns from 8:00 AM to 9:00 AM and from 3:00 PM to 4:00 PM on school days.

2. Along Mayor Drive, implement the following turn and parking restrictions:
 - a) Prohibit on-street parking on the south side of Mayor Dr 8:00 AM to 9:00 AM and from 3:00 PM to 4:00 PM on school days to provide additional width for two-way traffic.
 - b) Remove the "NO-RIGHT TURN" signs and delineators at the school drop-off exit driveway and allow vehicles to turn right onto Mayor Drive.

Attachment 3 provides an exhibit showing the proposed traffic calming measures. A public notice (Attachment 4) was mailed to the 9 impacted properties notifying those residents of tonight's meeting per the notification area shown in Attachment 5, as well as provided to the Calle Mayor Middle School Principal for distribution. Attachment 6 provides the report from the April 1, 2024 Traffic Commission meeting.

Respectfully submitted,

CRAIG BILEZERIAN
PUBLIC WORKS DIRECTOR

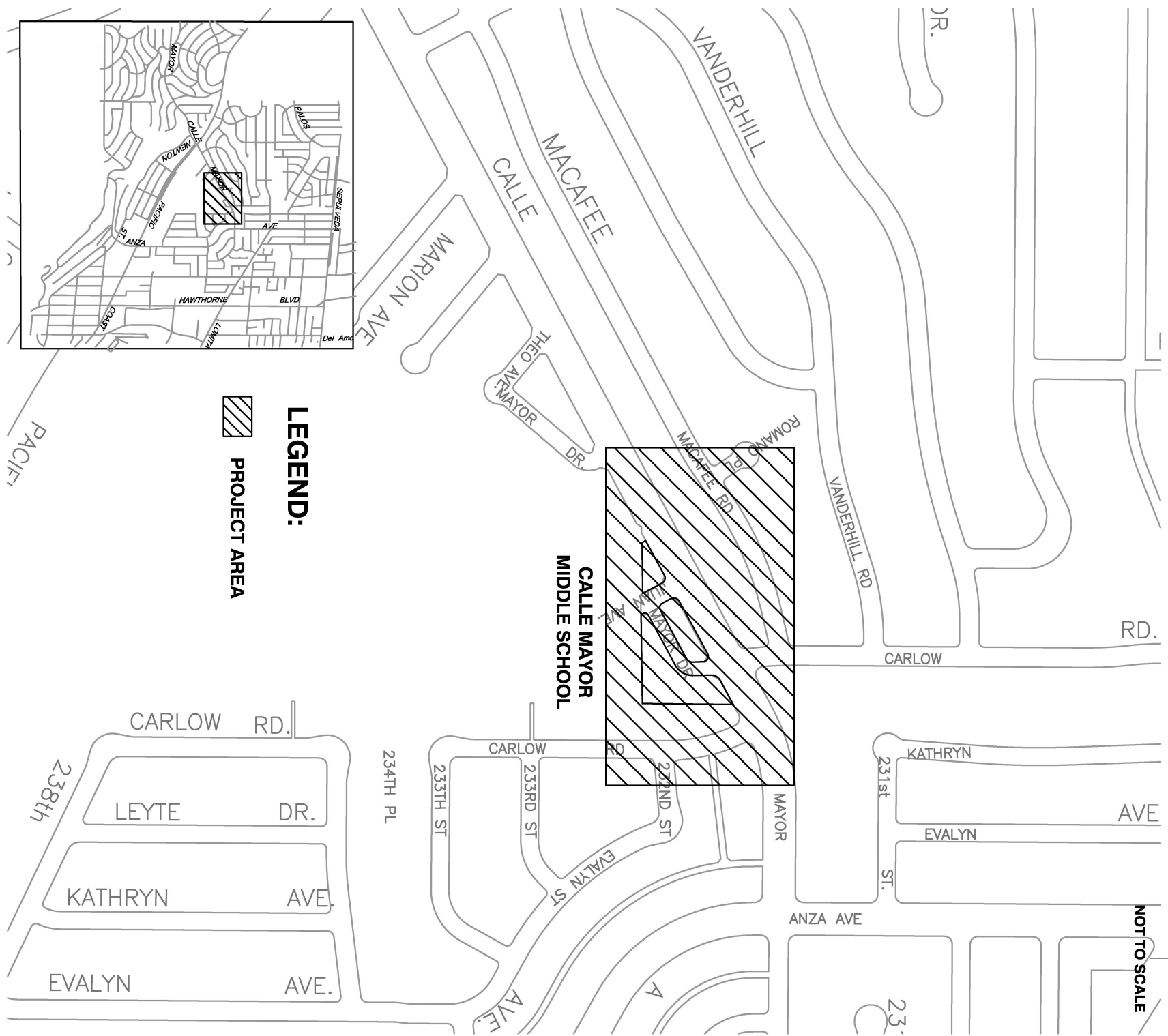
By  Beth Overstreet
for Shin Furukawa
Deputy Public Works Director/City Engineer

- Attachment 1: Project Location Map
- Attachment 2: Existing Conditions Map
- Attachment 3: Proposed Conditions Map
- Attachment 4: Public Notice
- Attachment 5: Notification Area
- Attachment 6: April 1, 2024 Traffic Commission Report (without attachment)

CITY OF TORRANCE

PROJECT LOCATION MAP

NOT TO SCALE



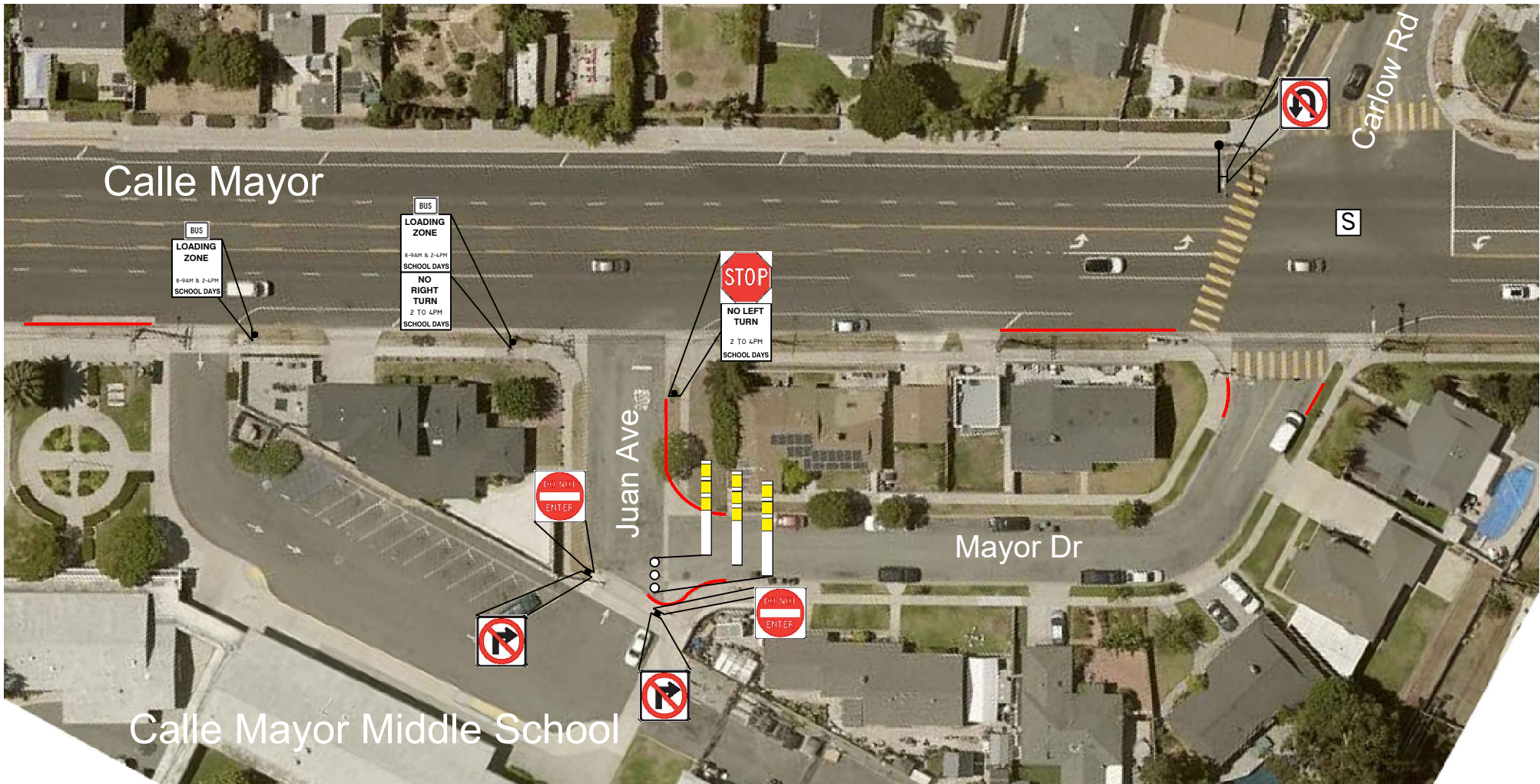
**CALLE MAYOR
MIDDLE SCHOOL**

LEGEND:

 **PROJECT AREA**



CITY OF TORRANCE CALLE MAYOR MIDDLE SCHOOL EXISTING CONDITION MAP



R1-1



R3-1



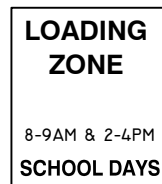
R3-4



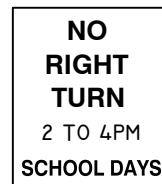
R5-1



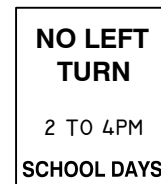
R3-5gP (MOD)



CUSTOM "LOADING ZONE"



CUSTOM "NO RIGHT TURN"



CUSTOM "NO LEFT TURN"



WHITE DELINEATOR

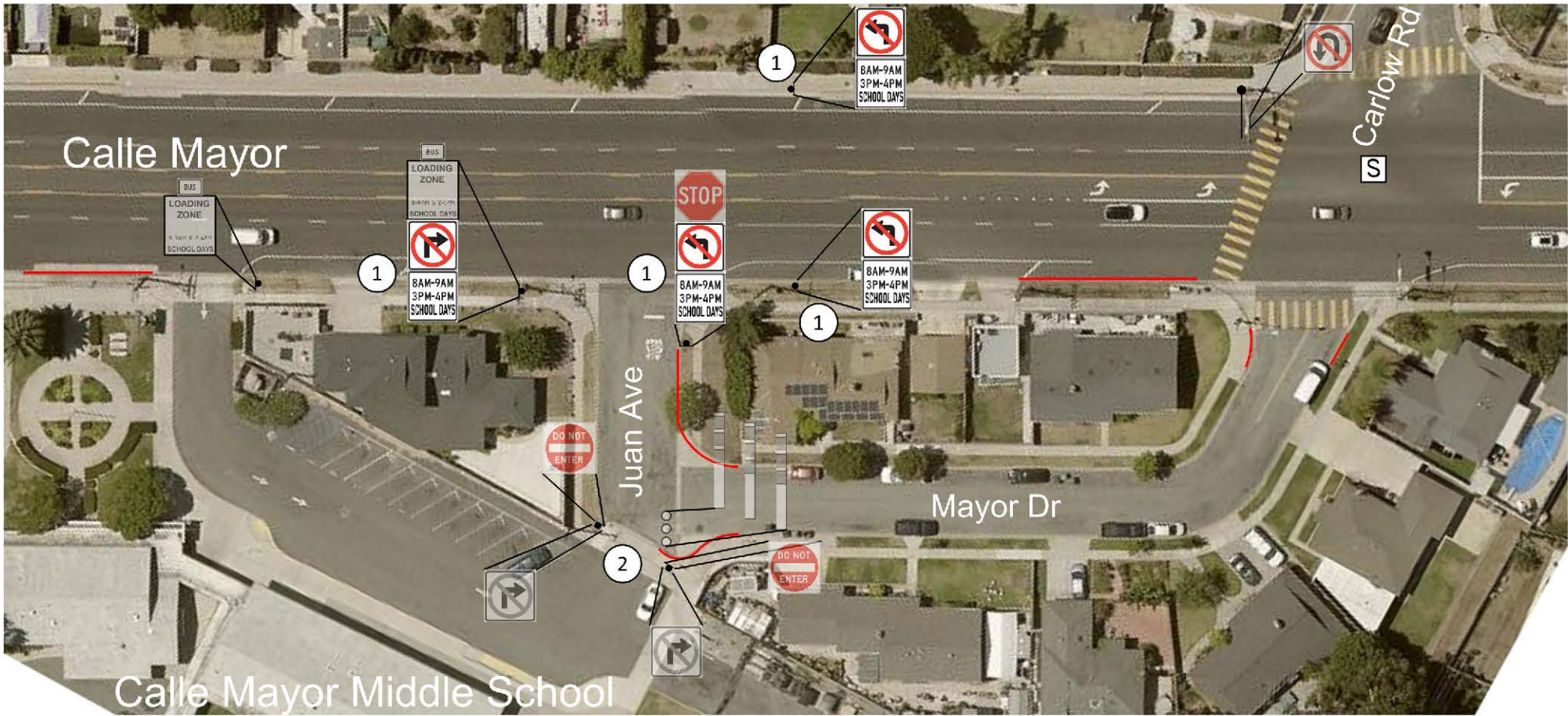
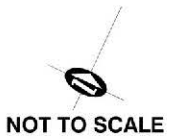


SIGNALIZED INTERSECTION

RED CURB

X:\ENG\TRAFFIC_ENGINEERING_GROUP\07_Traffic_Commission\3_Meetings\2024\12-2-2024_Existing_Conditions_Map_Existing_Condition_Map.dwg 11/13/24 16:59 DSImons







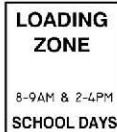



CITY OF TORRANCE CALLE MAYOR MIDDLE SCHOOL SUGGESTED TRAFFIC CALMING MEASURES



Suggested Traffic Calming Measures:

- ① At the intersection of Calle Mayor and Juan Ave, install turn restriction signs for westbound, eastbound, and northbound traffic with certain turning movements prohibited from 8:00 AM to 9:00 AM and from 3:00 PM to 4:00 PM on school days.
- ② Remove "NO-RIGHT TURN" signs and delineators at the western end of Mayor Drive and allow drop-off vehicles traveling northeast along Mayor Drive to make turns at the signalized intersection with Calle Mayor.

Legend:

				
R1-1	R3-1	R3-2	R3-4	R5-1
				
R3-5gP (MOD)	CUSTOM "LOADING ZONE" 8-9AM & 2-4PM SCHOOL DAYS	WHITE DELINEATOR	SIGNALIZED INTERSECTION	RED CURB

ATTACHMENT 3



NOTICE OF TRAFFIC COMMISSION MEETING

CITY OF TORRANCE

Discussion of Traffic Calming Measures Adjacent to Calle Mayor Middle School On Calle Mayor, Mayor Drive and Juan Avenue

Monday, December 2, 2024 at 7:00 p.m.
Torrance City Hall – West Annex Commission Room
3031 Torrance Boulevard

On **Monday, December 2, 2024 at 7:00 p.m.**, discuss proposed traffic calming measures in the vicinity of Calle Mayor Middle School including Calle Mayor, Mayor Drive, and Juan Avenue, as a follow-up to concerns raised by public at the April 1, 2024 Traffic Commission meeting.

Public input is an important part of the City’s decision-making process. You may provide input by speaking at the meeting or by submitting comments in writing to: TrafficCommission@TorranceCA.Gov by 2:00 p.m. on the day of the meeting.

Information about the subject topic will be included in the Commission Agenda Packet, which will be posted on Wednesday, November 27, 2024 on the Traffic Commission website at: <https://www.torranceca.gov/government/city-clerk/commissions-and-advisory-boards/traffic-commission/agendas-minutes/-folder-5369>



For questions, please contact:

Helen Shi, Engineering Manager (310) 618-3069
www.TorranceCA.Gov/TrafficCommission

CITY COUNCIL

Mayor George K. Chen

Mike Griffiths Bridgett Lewis
Jon Kaji Aurelio Mattucci
Sharon Kalani Asam Sheikh

Rebecca Poirier Tim Goodrich
City Clerk City Treasurer

Aram Chaparyan
City Manager

Patrick Q. Sullivan
City Attorney



CITY OF TORRANCE

NOTIFICATION AREA



NOT TO SCALE



LEGEND:

 NOTIFIED PARCELS

Traffic Commission Meeting
April 1, 2024

Agenda Item No. 7A

TO: Traffic Commission

FROM: Craig Bilezerian, Public Works Director

SUBJECT: Discussion of Traffic Conditions Adjacent to Calle Mayor Middle School on Mayor Drive and Juan Avenue

RECOMMENDATION

The Public Works Director recommends that the Traffic Commission obtain public input regarding traffic conditions in the vicinity of Calle Mayor Middle School including Calle Mayor, Mayor Drive, and Juan Avenue.

BACKGROUND

In February 2024, Staff received a resident concern regarding congestion on Mayor Drive between Calle Mayor and Juan Avenue adjacent to Calle Mayor Middle School caused by two-way traffic on the narrow street. On February 15, 2024, Staff met with Calle Mayor Middle School Principal Mosley and Councilmember Mattucci to discuss the traffic impacts on Calle Mayor, Mayor Drive, and Juan Avenue during student drop-off and pick-up times.

ANALYSIS

Existing Conditions

Calle Mayor Middle School is located at 4800 Calle Mayor and serves students grades 6 through 8 in the southwest area of Torrance (Attachment 1). The existing signage, RED curb, turning and parking restrictions around the school are shown in Attachment 2. The campus opens at 8:20 a.m. on Mondays, Wednesday, Thursdays, and Fridays; and at 9:05 a.m. on Tuesdays. Classes begin at 8:40 a.m. on Mondays, Wednesday, Thursdays, and Fridays; and at 9:25 a.m. on Tuesdays. Classes end at 3:16 p.m. every day. The entrance to the student drop-off is accessed from Calle Mayor and exits onto Juan Avenue. Juan Avenue is approximately 100 feet long, 33 feet wide, and parking is allowed only on the west side. Parking is prohibited on Wednesdays between 11 a.m. and 2 p.m. for street sweeping. The intersection of Juan Avenue at Calle Mayor is controlled by a STOP sign, and northbound vehicles must turn either left or right onto Calle Mayor. During school days, northbound left turns onto Calle Mayor are prohibited between 2 p.m. and 4 p.m.

Mayor Drive is a 300-foot-long residential street that is bounded by Juan Avenue on the west and Calle Mayor on the east. Mayor Drive is 27 feet wide and parking is allowed on both sides. Parking is prohibited on the south side on Wednesdays between 11 a.m. and 2 p.m. for street sweeping. Parking is prohibited on the north side on Thursdays between 2 p.m. and 5 p.m. for street sweeping. The intersection of Mayor Drive at Calle Mayor is controlled by a traffic signal. During student drop-off and pick-up times, a crossing guard is present at the intersection to assist with heavy pedestrian movements.

Calle Mayor between Anza Avenue and Pacific Coast Highway is a minor arterial that serves residents, businesses, and Calle Mayor Middle School. The existing lane configuration has two through lanes in each direction, a shared center turn lane, and parking is allowed on both sides. The average daily traffic on Calle Mayor is 13,000 vehicles, with the higher traffic volume in the eastbound direction. During school days, eastbound Calle Mayor between the entrance of the student drop-off and Juan Avenue is a bus loading zone between 8 a.m. to 9 a.m. and 2 p.m. to 4 p.m. and right-turns from eastbound Calle Mayor to southbound Juan Avenue are prohibited between 2 p.m. and 4 p.m.

Observations

Traffic observations were performed on Friday, March 1, 2024 during the student drop-off period between 8:15 a.m. to 9:15 a.m. and the pick-up period between 2:45 p.m. to 3:45 p.m. and on Thursday, March 28, 2024 during the student drop-off period between 8:15 a.m. and 9:15 a.m.

Vehicles travelling westbound on Calle Mayor were observed to turn left into a) the student drop-off entrance, b) onto Juan Avenue, or c) onto Mayor Drive. The dominant turning movements observed were a) and c).

- a) Vehicles that enter the student drop-off must exit the parking lot onto Juan Avenue to return to Calle Mayor. There are "No Right Turn" signs and delineators to restrict vehicles that exit the student drop-off parking lot from turning right onto Mayor Drive. However, some vehicles were still observed turning right onto Mayor Drive.
- b) Vehicles that enter onto Juan Avenue going southbound turn left onto Mayor Drive to return to Calle Mayor.
- c) Vehicles that enter onto Mayor Drive going southbound turn right onto Juan Avenue to return to Calle Mayor.

Vehicles travelling eastbound on Calle Mayor were observed to a) drop off students along Calle Mayor, b) turn right to enter the student drop-off and exit onto Juan Avenue, or c) turn right onto Juan Avenue. The dominant movements observed were a) and b). No vehicles were observed turning right onto Mayor Drive. School buses parked in the designated loading zone along eastbound Calle Mayor between the entrance of the student drop-off and Juan Avenue.

The majority of vehicles were observed to enter the streets adjacent to the school, double park and briefly stop to allow student(s) to exit/enter the vehicle, then proceed to exit the area.

Neighborhood Congestion:

During the observation periods, the following factors were observed to contribute to congestion on Juan Avenue and Mayor Drive:

- For northbound vehicles on Juan Avenue trying to turn left onto westbound Calle Mayor during the drop-off period when left turns are allowed, vehicles must wait until there is a gap in traffic in the eastbound and westbound direction. In addition, vehicles queue in the shared center turn lane on Calle Mayor to turn left into the student drop-off, making it more challenging to turn left onto Calle Mayor from Juan Avenue.
- For northbound vehicles on Juan Avenue trying to turn right onto eastbound Calle Mayor, vehicles must wait until there is a gap in traffic in the eastbound direction. In addition, due to the proximity of the bus loading zone to the west and vehicles queueing on eastbound

Calle Mayor due to the proximity of the signalize intersection to the east, vehicles must wait and proceed slowly to turn right onto eastbound Calle Mayor.

- For northbound vehicles on Mayor Drive, vehicles must wait for pedestrians to cross the west leg of the intersection before turning left onto Calle Mayor and must wait for pedestrians to cross the south and east legs of the intersection before turning right on Calle Mayor.
- Due to the narrow widths of Juan Avenue and Mayor Drive, the two-way traffic and parked vehicles on the streets also significantly slowed traffic flow.

Before staff performs further analysis of potential modifications which could include turning restrictions and/or parking restrictions, public input is requested to better understand the experiences of affected residents living adjacent to the school and representatives from Calle Mayor Middle School. Public input is an important part of the City's decision-making process. Tonight's discussion will help staff identify the best alternatives to address the traffic concerns. A public notice (Attachment 3) was mailed to 9 parcels notifying residents of tonight's meeting per the notification area shown in Attachment 4, as well as the school Principal.

Respectfully submitted,

CRAIG BILEZERIAN
PUBLIC WORKS DIRECTOR

By  *Shin Furukawa*
for Shin Furukawa
Deputy Public Works Director/City Engineer

Attachment 1: Project Location Map
Attachment 2: Existing Condition Map
Attachment 3: Public Notice
Attachment 4: Notification Area